

Thompson, Manitoba

Community Profile  
2010

Communities in  
Bloom



# Tidiness Effort

The Clean Community Project is sponsored by City of Thompson, Community Futures North Central Development and Thompson Neighbourhood Renewal Corporation, 700 bags were pick up in May for \$3.00 a bag this was down from last year due to the automated garbage pick up, Thompson is becoming a cleaner city.

CFNCD Is A Proud Sponsor

## Clean Community Project

### May 1st to Sept 30th 2010



**Clean Community Project**  
**KICK OFF MAY 1ST**  
A. \$3 Per Bag, Register At Robins Donuts  
**B. 9:00AM - 4:00PM**  
C. All Participants Are Entered In A Draw For ABBO

**Ambassador Program**  
**Sponsored By TNRC**  
A. Downtown Ambassadors Will Be Giving Out  
**"Good Tickets"**  
**B. TNRC AT 677-0760**  
**For Information**

**\$3 Per Bag Will Be Offered By The**  
**City Of Thompson For The**  
**Month Of May**  
**Call Public Works**  
**At 677-7970 For Info**

**Communities In Bloom**  
A. Thompson Have Signed On With  
The National Initiative Which  
Beautifies Communities And  
Increases Community Pride

**E - Waste**  
You Can Drop Off E - Waste At The  
Public Works Yard From  
**8:00AM - 1:00PM**  
From May 1ST To Oct 30TH



# Tidiness Effort

## Graffiti Prevention

In August 2007 the City of Thompson developed a partnership with the Thompson Neighborhood Renewal Corporation (TNRC) to provide graffiti cover-up services as a pilot project. TNRC worked with the Canadian Mental Health Association employment program to deliver the service. 2008 marked the first year that CMHA partnered with the City of Thompson to offer this free service to businesses in Thompson.

On a daily basis, citizens of Thompson see graffiti vandalism. Just like the big cities in Canada, graffiti is a huge problem that costs taxpayers money each year to repair the property damage. Individuals living with a mental illness/mental health issues work to cover up all current graffiti free of charge to businesses around the City of Thompson within a timely fashion which help the personnel gain social skills and work experience.



Before



After

If you clean up graffiti...

- \* within 24 hours, there is a 10% chance it will reappear
- \* within 2 weeks, there is a 100% chance it will reappear
- after 6 months – 1 year, there is a 1000% chance it will reappear

## Dumpsters

All Containers for mechanical pick up have been placed in enclosures which are constructed of at least three sides. This helps to keep the garbage enclosed in the area.



Vionell Holding Townhouses

# Environmental Awareness

## Shoreline Stabilization

Mb Hydro started the new shoreline stabilization in 2010 on the Burntwood River. The shoreline stabilization stops erosion and enhances the city banks.



Shoreline Stabilization  
after picture



## Compost

2010 the City Thompson built a new compost site, for leaves and grass. Seeing each day more and traffic coming through, it is becoming a life style



Before



After



After

## Recycling/Garbage Receptacles

The recycling program had increased by 60% in volume. Garbage has reduced by 60% with the co mingle curbside collection the community has total by in.

The City of Thompson has transitioned from manual to automated curbside pickup of waste collection beginning of November. This change will:

1. improve the safety of City employees who currently manually load solid waste on residential street.
2. Allow employees to work on other activities around the City.
3. Reduce the amount of waste that needs to be removed by the City overall
4. Beautify and help us reduce litter from our community



Garbage and Recycling Receptacles after  
Photo's provided by City of Thompson



Garbage Receptacle after  
Photo provided by City of Thompson

# Community Involvement

## Communities in Bloom Kick –Off

Front; Councilor Charlene Lafreniere,  
Back; Councilor Judy Kolada and  
Councilor Oswald Sawh



Mayor Tim Johnston  
and  
Councilor Erin Stewart



Councilor Stella  
Locker and Deputy  
Mayor Harold Smith  
missing in Photo

The Mayor and Councilors Kicked –off Communities in Bloom by planting flowers in planters in front of City Hall.

June 30,2010

By Ryan Flanagan  
news@thompsoncitizen.net



Thompson could well be looking a little more beautiful this summer, thanks to the efforts of the Communities in Bloom committee.

Communities in Bloom, established in 1995 as a not-for-profit entity, is a cross-Canada initiative designed to promote the beautification of cities and towns all over the country. This is Thompson's first year participating in the program. "It helps beautify the city," said committee member Betty Landego. The Thompson Communities in Bloom committee is a subcommittee of the Thompson Downtown Revitalization Committee.

In 2010, Thompson is taking part of two aspects of Communities in Bloom—the Manitoba Communities in Bloom program as well as the Community Pride Beautification Competition.

Manitoba Communities in Bloom will see Thompson compete against approximately 20 other communities from all over the province. Towns will be judged based on a series of criteria including tidiness, environmental action, heritage conservation, urban forestry, landscape, turf and groundcovers, floral displays, and community involvement.

The judges will visit Thompson on July 28. "It'd be really great if everyone would have their lawns mowed and garbage taken out that day," Landego suggested with a chuckle. Winners of the provincial competition will be announced in Killarney at a later date; the national finals are being held in Halifax in late October. Dauphin, Winnipeg, Birtle, Neepawa, Virden, and Binscarth have all won national awards in the past, while Boissevain won five international awards in 2006.

Coun. Erin Stewart encouraged all Thompson residents to do their part to help impress the judges. "Whether it's a flower basket hanging from your apartment balcony, or a garden at your workplace or business, let's make sure we show these judges the best of what Thompson has to offer," she wrote.

# Community Involvement

June 30,2010

By Ryan Flanagan  
news@thompsoncitizen.net

Continued from previous page

The Community Pride Beautification Competition is designed to give individual Thompson residents a chance to participate in the beautification of Thompson. Residents are encouraged to pick up nomination forms at Wal-Mart, Canadian Tire, City Hall or Thompson Unlimited and nominate either their own or their neighbours' yards as the most beautiful in Thompson. Each neighbourhood will be judged independently on August 14. No cash prizes are on the line in either the local or the provincial competitions—only pride in your yard or city as the most beautiful in the area.

Thompsonites might also notice an enhanced green presence on the staircase in front of City Hall, where Mayor Tim Johnston and city council each planted their own flowerpots as part of a friendly competition organized to promote Thompson Communities in Bloom. "These unique horticultural works of art will be on display outside of city hall for residents to view all summer," wrote Stewart, "with the Communities in Bloom judging panel announcing the winner of the best flowerpot in mid-August." One pot has been dedicated to the memory of Brian Wilson, the former councilor and superintendent who passed away in May.

The Thompson Communities in Bloom subcommittee consists of Stewart, Landego, Roxie Binns, Matthew Pawlow, June Bourguignon, Angie English, Jim English, Doreen Lindquist, Bruce Holmes, and Tanna Teneycke.

Landego is looking forward to a successful 2010 program that can carry into the future. "Hopefully we'll do this again next year," she said.

## Beautifying Downtown Thompson

The CiB Committee partnered with the City of Thompson, Wal-Mart and Community Futures North Central Development. 2010 is the first year the City has placed ground planters on median triangles. 4 volunteers planting the flowers.

July 14,2010

Thompson Citizen & Nickel Belt News



Photo by  
Donna Wilson,  
Thompson Citizen

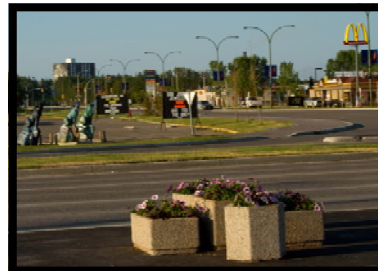


Photo by  
Brian Taylor

"All of Thompson" will be participating in a citywide pride beautification competition this summer as part of Communities in Bloom, says Valdine Flaming, the City of Thompson's communications officer. The competition is for residents, businesses, industries and institutions and nominations close July 16. Entry forms can be picked up at Canadian Tire, Wal-Mart, City Hall, Thompson Unlimited, Thompson Public Library, or online at [thompsonunlimited.ca](http://thompsonunlimited.ca). From left to right doing some downtown planting are Angie English, Whitney Landego, Roxie Binns and Betty Landego. English works the City of Thompson while Binns and Betty Landego are Thompson Unlimited employees.

# Community Involvement

## Volunteers Building Rotary Park

### Rotary Park Development Association

Rotary Park Development Association is a group of community members who got together March 2009 with the goal of revitalizing a green area in Thompson known as Rotary Park. This group has a core membership of approximately 12 people with varied backgrounds, with many other community members volunteering when ever needed.

The revitalization has been divided into 3 phases:

Phase 1:

2 Play structures, horse shoe pits, benches, picnic tables, bike rack, garbage can, toddler swing set, flower planter and sign, and maintenance and repair on existing swing set.

The group has now started fund raising for phase 2. This phase could be complete as early as summer of 2011 ,if enough funds are raised.

Phase 2:

Splash park with filtered and cleaned recirculated water to reduce environmental impact, benches, picnic tables, garbage cans, shed to house pumps and parking.

Phase 3:

Muti- Sport Unit



Rotary Park Before  
Photo by Brian Taylor



Rotary Park Before  
Photo by Brian Taylor



Rotary Place After  
Photo by Jennifer Dyke



Rotary Place After  
Photo by Jennifer Dyke

# Community Involvement

## Skate Park

The Thompson Skate Park Committee was formed in 2007 as a result of a community youth push for a permanent skate park. It has been grassroots from inception and with assistance from CFNCD, has maintained a focus on being a community youth development project. Youth from the ages of 9 to 30 have actively participated in approaching City Council, meetings, design input, fundraising, marketing, proposal preparation, budget review, etc. Community adults, businesses and organizations have contributed time, energy, services and monetarily. Through setbacks, bad weather and glitches that always happen in a learn-as-you-go project, the 70+ youth and adults of the Skate Park Committee hunkered down and kept working towards their goal.

A close partnership developed with the City of Thompson led to the vision of incorporating the skate park into a Master Plan that included other free outdoor activities. The component pieces (half-pipes, volcano, etc.) were placed in 2008, and Summer 2010 will see the final pouring of the in-place concrete and (drum roll, please!) the completion of the skate park. Within the bigger vision of basketball hoops, tennis courts and public viewing space, it promises to be a popular family and community gathering place for years to come and serves as a testament to the power of our community youth's vision and resilience.



Skate Park Before  
Photo's by Brian Taylor  
Project to be completed  
by Aug. 31, 2010



## TDRC Banner Program

The downtown core of Thompson has been a focus of attention for some time concerning the need for improvement. The Thompson Downtown Revitalization Committee has completed a report that recommended activity, appearance and infrastructure be 3 highlighted actions to improve the area. The TDRC purchased banners for 3 streets, with Community Pride and Downtown printed on them.



Before



After



Before



After

# Community Involvement

## TDRC Bolder project

The Committee developed the idea of placing boulder features along the center median of Mystery Lake Road between the intersections of Burntwood Road and Riverside Drive (section of road under the jurisdiction of the City of Thompson). This high traffic/visibility area along the re-developed portion of Mystery Lake Road was thought by the committee as an area offering a larger positive impact by adding something unique, green and esthetically appealing. These features express our Community Pride to residents as well as visitors from North and South.



Landscape consultant engaged to prepare the boulder features along Mystery Lake Road.



Banner and Boulder Feature

# Natural and Architectural Heritage Preservation

## Spirit Way acknowledged as Star Attractions

Spirit Way is a walkway with 16 Points of Interest that showcases unique aspects of Thompson's history, art & culture, environment, industry, geology and people. Many elements are unique - largest photo-real mural in Canada and the largest lighted mural in the world, start of Canada's largest rock face sculpture, most unique firefighters statue in North America. The painted wolf statues along the way are part of a province wide GPS Wolf Hunt that showcases the tremendous talents of Northern Manitoba artists. These elements are linked together on a pathway that provides proof that Thompson's cultural history is tied in amazing ways to its people and natural environment. Spirit Way did not exist 5 years ago and is testament to volunteer work and the \$1.5 million they raised. Less than 5% of funds has come from municipal taxes.

[www.thompsonspiritway.ca](http://www.thompsonspiritway.ca)



Photo by Larry Hall



Photo by Larry Hall



Photo by Larry Hall



Photo by Brian Taylor

# Urban Forestry

## City of Thompson planted trees in the fall

For a number of years now the City of Thompson has partnered with various non profit agencies in applying to the Manitoba Hydro Forest Enhancement Fund for funding grants for the purchase of high value urban trees. The grant proposals, to date, have been approved by Manitoba Hydro and the trees purchased and planted. The trees typically purchased are two inch caliper, six to eight feet in height, with the root ball in a basket. The City of Thompson has found that a fall planting of these high value urban trees leads to better survival, health and vigor. This is due, to the fact; the trees are planted while in dormancy and receive a good spring flush of moisture.

The trees are planted in highly visible City boulevards, parks and points of interest. The City provides watering, pruning etc. Thompson is located in the northern portion of the Boreal Forest and thus the extreme climate can wreck havoc on trees and shrubs. The City has been diligent in replacing dead and damaged trees. The types of trees the City plants are Flowering Crab, Mountain Ash, Hybrid Poplar, Green Ash and White Spruce. The City will continue planting high value urban trees in the future to enhance the Urban Forestry of our northern city.



After



After

# Urban Forestry

## Hometown MB Grant Received for Businesses

The downtown core of Thompson has been a focus of attention for some time concerning the need for improvement. The Thompson Downtown Revitalization Committee has completed a report that recommended activity, appearance and infrastructure be 3 highlighted actions to improve the area. Tree planting was adopted by the committee as one means toward improving appearance and possibly positive activity. It was also affirmed that small businesses have a significant part to play in downtown revitalization. Further, Thompson is surrounded by pristine northern boreal forest, yet inside the city downtown core, trees are noticeably few and far between. As part of improving the appearance of the downtown core, introducing trees within the urban streetscape adds a sense of wilderness and ties in very well with the award winning Spirit Way and the theme of wolves.

In 2009, the Thompson Downtown Revitalization Committee submitted a grant application to the Hometown Manitoba - Tree Planting Program. The Committee was successful in obtaining a \$5,000 grant that was supplemented with the Committee's contribution, and used to purchase trees and shrubs for planting on business properties located in the Downtown Area. This application was rather unique in the sense that a nonprofit organization made an application on behalf of local businesses for the planting of trees on private land as opposed to public or park land.

Involving the Thompson Chamber of Commerce, a message was sent to all Chamber members advising them of an opportunity to partner on the tree planting project subject to them agreeing to select, plant and care for trees placed on their respective property. Interested businesses were asked to step forward. Seven local businesses expressed interest. Each business had approx. \$1,071 in which to use purchasing trees, and the actual number of trees purchased per business depended on the price of the particular tree that the business wished to have planted on their respective property



Trees  
planted in  
November of  
2009.

Summer of 2010



# Landscaped Areas

## From Miner to King Miner

The City of Thompson commissioned international artist/sculptor George Barone to create 'The Miner' statue in 1981. Photographs of miner Lorne Spicer provided the basis for the statue, which is made of polyurethane foam and steel mesh coated with fiberglass. It stands 15'9" (4.5 meters) and weighs 4,000 pounds (1,800 kg).

The City dedicated the statue at its original location — the entrance to the Recreation Centre, which was also the permanent site for the National King Miner Contest. The dedication was a highlight of the City's 25<sup>th</sup> anniversary celebrations in 1981.

Eventually the statue began to deteriorate, and in 2009, the City awarded the task of refurbishing the statue to John Henry Creations of Winnipeg. When it returned, it was erected at the south entrance of the City against a backdrop of the mine site and boreal forest to serve as a welcome.

The original plaque on the statue was titled "The Miner," but over time, residents and visitors began referring to it as "The King Miner Statue". In recognition of this new honour, Mayor Tim Johnston rededicated it in 2010 as "The King Miner Statue."



Before



After

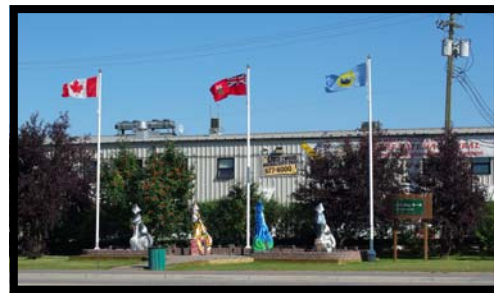
# Landscaped Areas

## Spirit Way

Spirit Way Inc's objective was not to burden the City of Thompson with large maintenance costs after the projects were completed. The type of materials used during construction were chosen to be low maintenance and relatively vandal proof. Viewpoint structures are built from pressure treated wood that require no staining, steel ribs that require no painting, and recycled car plastic that requires no maintenance. Displays are covered with clear lexan to protect the artwork from graffiti and scratching. A casual group of volunteers was formed called FRIENDS OF SPIRIT WAY. Their role is to help with maintenance and beautification, promotion, and tours at their own pace. Weekly litter cleanups are arranged from the Museum. Any graffiti is removed within 48 hours. Every spring landscape improvements are made by these volunteers.



Before, Photo by Larry Hall



After, Photo by Larry Hall

## Brushing Program

The City of Thompson began brushing out forest areas within the City circa 2005 with the assistance of the Manitoba Conservation wildfire crews. The purpose of the brushing was to improve health and safety of pedestrians that travel through or adjacent to these forest areas. The removal of shrubs, dead trees and accumulated garbage creates a visual "line of sight" for pedestrians. The City of Thompson purchased a mulcher in 2009. The mulcher is attached to a Bobcat and provides an effective means of maintaining areas that have been previously brushed. This program has been very popular with the residents of Thompson as it provides safety in travel and it improves the aesthetics of the forest areas. The City of Thompson has numerous forest areas within and adjacent to the City. The brushing program is focused on areas that have high pedestrian traffic. The 2010 program is focused on the Deerwood area of Thompson.



Before, photo by Brian Taylor



After, photo by Thompson Unlimited

# Floral Displays

## Heritage North Museum Flowers and Wolves

We have two beautiful wolf statues on our grounds at the Heritage North Museum. One of them is the “mining” wolf and the other is “Loreen’s Garden”. The Museum grounds will always be their permanent home. Loreen’s Garden holds a special place in our hearts as it was donated to us by a very loving volunteer. Bill Laing donated it to the Museum in his wife’s loving memory. She was known for her beautiful garden so he wanted her wolf to be painted with flowers. He asked Jan Hall to paint the wolf in her memory, and she did. We wanted to honour both Loreen and Bill’s memory by planting a flower garden around the wolf, we were so proud of our decision that we also planted flowers around our beautiful mining wolf painted by Jasyn Lucas. Thanks to the dedication of our wonderful volunteers we can take pride in our magnificent flower memorial.



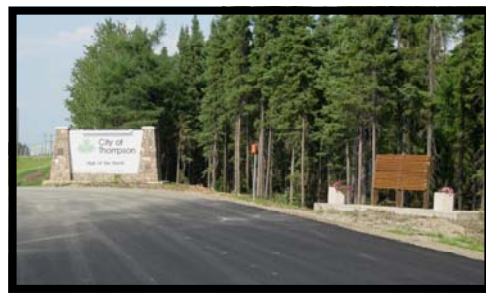
After picture

## Communities in Bloom Project

Communities in Bloom in partnership with MB Hydro and City of Thompson the project was to beautify the south and north entrance, the north entrance will be developed next year. An old sign was removed and a new display panel was built. The display panel will have the City of Thompson Map and the history of the King Miner, with two planters and rock chips as the ground cover. This project will be completed by July 25, 2010



Before



After